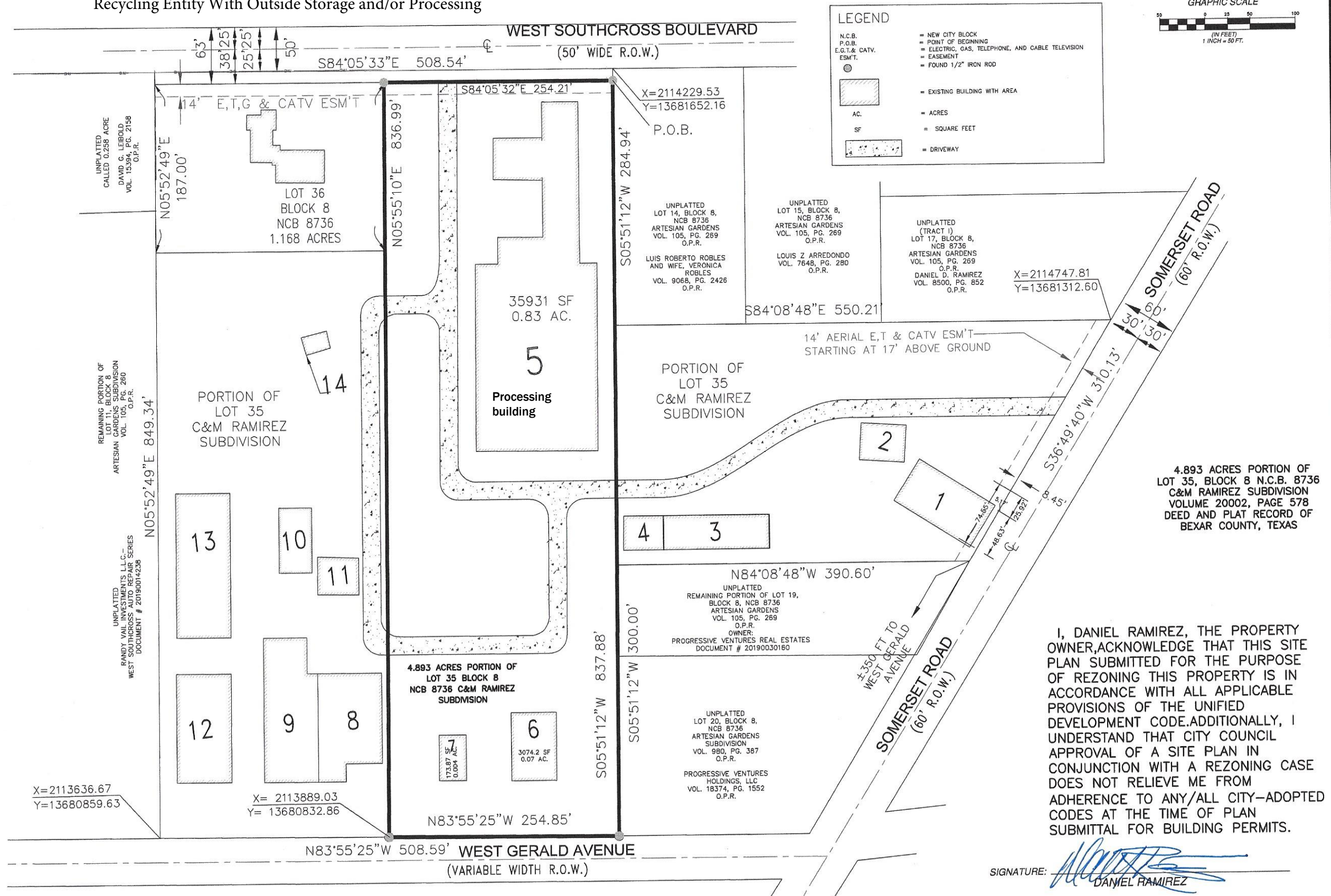


"L" Light Industrial to "I-2 S" Heavy Industrial with a Specific Use Authorization for a Metal Recycling Entity With Outside Storage and/or Processing



Seda Consulting Engineers, Inc.
Firm Registration No: F-1601 (210) 308-0057
6735 IH 10 West FAX: (210) 308-8842
San Antonio, Texas 78201 e-mail: seda@sabxrr.com
CIVIL • STRUCTURAL • ENVIRONMENTAL • PLANNER



**C&M RAMIREZ SUBDIVISION
SITE PLAN
WITH EXISTING BUILDING**

JOB NO. 1790
DATE: 06/25/2021
DRAWN BY: MF
CHECKED BY: SED
SHEET: 1 OF 1